



Genie Used Equipment Listing Details

2008 GENIE Z-135/70 4WD Diesel Articulating Boom

USD 74,179.00

Unit Specifications

TMS ID	1019154*UEQ
Year	2008
Make	GENIE
Model	Z-135/70
Serial Number	Z13508-669
Equipment Type	Articulating Boom
Drive	4WD
Power	Diesel
Height	
Engine Make	Deutz
Engine Model	
Hours	2,103.0
Location	STACK EQUIPMENT LLC HARTFORD Wisconsin

Contact Information

Genie Used Equipment
1 (800) 800-1290
AWP.GenieUsedEquip@terex.com


All sales of used equipment by Genie are subject to Genie's standard terms and conditions of sale of used equipment. Used equipment shown on this web site or otherwise sold by Genie is sold as-is, where is, with all faults, and Genie makes no warranties of any kind, express or implied, with respect to it.

Inspection Report

As the buyer, you are responsible for reviewing all details of the inspection report.

Star Ratings

- ★★★★★ Limited use or recently replaced. Free of visible wear or defects.
- ★★★★☆ Performs within the tolerances expected for age and type of unit.
- ★★★☆☆ Although performing, shows indication of needing repair or replacement.
- ★★☆☆☆ Needs immediate repair or replacement to function as expected.

Description	Details / Rating	Comments
On a scale 1-4, how would you rate the overall condition of this equipment?	★★★★☆	
Inspect paint condition (fading, flaking paint, customer colours)	★★★★☆	
Inspect machine for any damage (Covers, panels, controls etc)	★★★★☆	220v plug ripped out, eng fan shroud cracked
Inspect decals condition (Identify missing or damaged)	★★★★☆	
Inspect for significant oils leaks and identify source	★★★★☆	wetness at TT rotator
Does the machine have any options (Generator etc)	YES	generator, glow plugs, work lights, pipe cradle
		
Inspect operators and safety & responsibility manuals are in place	YES	
All open bulletins addressed	NO	100011, 120007, 130005, 140019, 150002
Inspect tires and wheel for damage and wear	★★★★☆	RR tire missing chunk
Inspect axles for corrosion, damage or missing parts	★★★★☆	

Inspect chassis for corrosion, damage or missing parts	★★★★☆	
Inspect turntable or chassis covers for corrosion, damage or missing parts	★★★★☆	couple bent covers
Inspect link stack for corrosion, damage or missing parts	N/A	
Inspect boom assembly for corrosion, damage or missing parts	★★★★☆	secondary booms drift out
Inspect jib assembly for corrosion, damage and missing parts	★★★★☆	
Inspect platform assemblies for corrosion, damage or missing parts	★★★★☆	plat gate missing spring latch
Perform function test from ground controls with 'Safe Work Load (Max/Min)' in platform		
Perform function test from platform controls		drives slow - under powered/throttle
Are the batteries charged?	YES	
Are the batteries holding a charge?	★★★★☆	
Would the equipment pass an annual inspection as per manufacturer's maintenance manuals?	NO	five open bulletins, secondary booms drift out, drive issue

4x Corner Shots (tires visible)





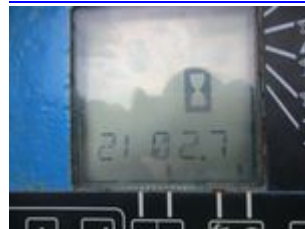
Engine Tray/Battery Pack



Fully Extended Equipment



Ground/Cabin Controls



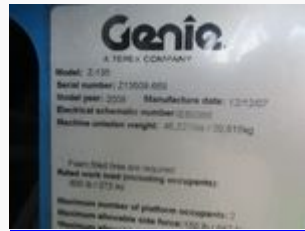
Platform Controls



Platform/Carriage & Forks



Serial Plate



Photos



