



Genie Used Equipment Listing Details

2007 GENIE Z-45/25N J 2WD Dual Fuel Articulating Boom

USD 18,375.00

Unit Specifications

TMS ID	1052812*UEQ
Year	2007
Make	GENIE
Model	Z-45/25N J
Serial Number	Z452507-33521
Equipment Type	Articulating Boom
Drive	2WD
Power	Dual Fuel
Height	45
Engine Make	Ford
Engine Model	DSG 423
Hours	2,645.0
Location	RITCHIE BROTHERS AUCTIONEERS DAVENPORT Florida

Contact Information

Genie Used Equipment
1 (800) 800-1290
AWP.GenieUsedEquip@terex.com

All sales of used equipment by Genie are subject to Genie's standard terms and conditions of sale of used equipment. Used equipment shown on this web site or otherwise sold by Genie is sold as-is, where is, with all faults, and Genie makes no warranties of any kind, express or implied, with respect to it.

Inspection Report

As the buyer, you are responsible for reviewing all details of the inspection report.

Star Ratings



Limited use or recently replaced. Free of visible wear or defects.







Performs within the tolerances expected for age and type of unit.



Although performing, shows indication of needing repair or replacement.



Needs immediate repair or replacement to function as expected.

Description	Details / Rating	Comments
On a scale 1-4, how would you rate the overall condition of this equipment?	★★★★☆	
Inspect paint condition (fading, flaking paint, customer colours)	★★★★☆	
Inspect machine for any damage (Covers, panels, controls etc)	★★★★☆	
Inspect decals condition (Identify missing or damaged)	★★★☆☆	missing decals
		  
Inspect for significant oils leaks and identify source	★★★★☆	
Does the machine have any options (Generator etc)	YES	fft, duel fuel
		



Inspect operators and safety & responsibility manuals are in place YES

All open bulletins addressed YES

Inspect tires and wheel for damage and wear ★★★★★

Inspect axles for corrosion, damage or missing parts ★★★★★

Inspect chassis for corrosion, damage or missing parts ★★★★★

Inspect turntable or chassis covers for corrosion, damage or missing parts ★★★★★

Inspect link stack for corrosion, damage or missing parts ★★★★★

Inspect boom assembly for corrosion, damage or missing parts ★★★★★

Inspect jib assembly for corrosion, damage and missing parts ★★★★★

Inspect platform assemblies for corrosion, damage or missing parts ★★★★★

Perform function test from ground controls with 'Safe Work Load (Max/Min)' in platform

Perform function test from platform controls

Are the batteries charged? YES

Are the batteries holding a charge? ★★★★★

Would the equipment pass an annual inspection as per manufacturer's maintenance manuals? YES

4x Corner Shots (tires visible)





Engine Tray/Battery Pack



Fully Extended Equipment



Ground/Cabin Controls



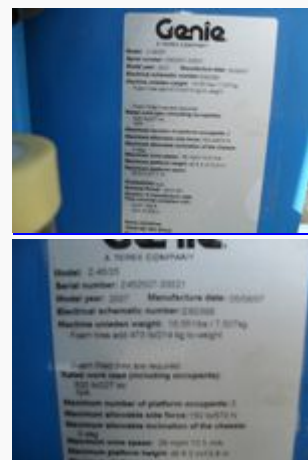
Platform Controls



Platform/Carriage & Forks



Serial Plate



Photos





